



# GoFish Nagambie

10 - 13 February 2022

## COMPETITOR'S GUIDE



[GOFISHTOURNAMENT.COM.AU/NAGAMBIE](http://GOFISHTOURNAMENT.COM.AU/NAGAMBIE)



**Congratulations on securing your place in the third GoFish Nagambie Tournament where you have the chance to win the \$80,000 Cod plus more cash and prizes. The river is stocked with our target species of Murray Cod, Golden Perch, Redfin and European Carp, you'll be reeling in prizes left, right and centre. This document outlines everything you need to know as an angler competing in the Tournament. Please ensure you read over all the details thoroughly, so you do not miss out on anything!**

Welcome to the GoFish Nagambie Tournament for 2022. Thank you very much for registering to fish in the competition and good luck with your fishing. We are excited to welcome you to this competition, we all had high hopes for a Covid Recovery since our 2021 competition, but that hasn't been the case. However, it is great that we are getting back on the Goulburn River to catch some big Cod, Redfin and Carp. This document outlines everything you need to know as an angler competing in the Tournament. Please ensure you read over all the details thoroughly, so you do not miss out on anything!

We are once again working with some of our great partners such as the Victorian Fisheries Authority to ensure you have great fishing conditions and some great prizes to fish for. We would like to thank you very much for your support of our event. We are really pleased that many of you are returning to Nagambie, we know that by now you will have your favorite fishing spots where the big Cod live. The great news is 2022 is looking great for fishing, for the first time we are allowed to fish in February which is a brilliant time to fish the Goulburn River. Warmer weather, more daylight, and a river with great structure in it for Cod fishing.

There are plenty of big Cod being caught and the Goulburn is proving to be one of the best Rivers to fish in at the moment. So, bring on the tournament and good luck landing that \$80,000 Cod.

Please ensure you follow the rules of the competition carefully. With so much money and prizes up for grabs we need to be strict about the rules. We want to make sure that cheats don't prosper, so we will have plenty of people on the river making sure it's fair for all. Our team is at the hub to support you so if you have any queries or concerns or you are having trouble with registering your catch, come and speak to us, we are here to help.

The prize pool this year is different, but our great cash prizes remain. We have a lot of spot prizes and category sponsors with some great prizes on offer and we will welcome you back to the Nagambie Regatta Centre each day for the daily prizes and some entertainment. Please see the list of sponsors in this guide and please make sure you support these businesses wherever possible. We couldn't do the tournament without the support of our great sponsors so enjoy the prizes and visit them at the hub zone.

It is important that you understand the rules and regulations of the tournament and you follow the speed regulations and fishing laws when you are on the water. Safety and a pleasant atmosphere for all of the competitors is our aim, your co-operation is important.

The Catch Manager catch and release tournament system to register your catch for the competition is well tested and easy to use. The photo taking methods for your phone are straight forward and we would like to ensure you have a good experience with our system. Please ensure you have acquainted yourself with our fish registration process and system and are comfortable using it. We will have a team of people at the Tournament Hub to help you get set up and answer any questions you may have so you're ready to go for the tournament. Make sure you are confident using the system before you get out there and cast a line in!

The Police and Victorian Fishing authorities will have a strong presence on the water each day. Please ensure you have your safety equipment serviced and on. PFD's should be worn and observe all Victorian regulations. If you are from interstate it is important that you read the regulations. Make sure you avoid fines! The idea is to be sensible and have a great time. Enjoy Nagambie and the Strathbogie Shire and catch plenty of fish! We really appreciate your support. Thanks for competing in our tournament. We hope you have a really enjoyable and successful GoFish Nagambie 2022.

**~ Rod Lockwood, Event Director**



**Our COVID Safe Guide will follow the requirements of Victorian State Government and the Chief Health Officers Directions that apply to delivering COVID Safe Events.**

## Stay apart to stay together at GoFish

Being COVID safe is a shared responsibility, and it is our aim to ensure that you have a fantastic time while you are at GoFish Nagambie but we also want to ensure that you remain safe while you are there.

The objective of this COVID safe guide is to protect the health, safety and wellbeing of patrons, staff, contractors, volunteers and the community.

## COVID-19 Vaccination Requirements

It is currently a Victorian Government requirement for all patrons attending venues and events aged 18 years or over to show proof of their full-vaccination status to our staff and/or volunteers upon entry into the venue and at registration. This is a condition of competition entry.

All competitors and visitors over 18 years entering the tournament and the tournament Hub, including the tournament campsite will need to show full COVID-19 vaccination status as a condition of entry.

Exhibitors, contractors, staff, and volunteers over 12 years and 2 months entering the tournament and the tournament Hub, including the tournament campsite will need to show full COVID-19 vaccination status as a condition of entry.

For a definition on what fully vaccinated means visit <https://www.coronavirus.vic.gov.au/how-we-live-vaccination-status>.

When you arrive at our venue (including Anaconda Campgrounds) and registration you will be asked to show proof of vaccination by one of our friendly staff or volunteers. The quickest and easiest way to show proof of vaccination is by adding your COVID-19 digital certificate to the Service Victoria

If you don't have a smartphone or are unable to use one, there are additional non-digital proof of vaccination status options available including an official copy of your Australian Immunisation Register vaccination certificate or a printed copy of your digital vaccination certificate from myGov alongside photo identification. Visit <https://www.coronavirus.vic.gov.au/get-your-covid-19-digital-certificate> to find out more.

Please note visitors that have a medical exemption are excluded from this requirement. Please show evidence of your medical exemption alongside photo identification—such as a medical certificate or a letter from a medical practitioner when entering the tournament venue and at registration.

The event organiser has the right to refuse entry to someone who cannot or will not show proof of vaccination or a valid exemption. Legal protections are in place. Patrons and visitors must prove their vaccination or exemption status to enter our venues and/or the tournament.

COVID-19 vaccination requirements are subject to change in line with Victorian Statement Government and health directive updates.



## Patrons Code of Conduct

- Stay home if you are unwell or have a cough, fever, sore throat, shortness of breath or loss of taste or smell. Please do not come to our event until you are completely well
- Maintain Physical distancing from people outside your core social group. Keep at least 1.5 meters away from others
- Wearing a mask is currently required for everyone aged 8 and above in all indoor settings in Victoria (unless an exception applies, such as when consuming food or drink). It is recommended that you wear a mask outdoors also if you can't physically distance.
- Avoid physical greetings i.e. handshakes, kisses and hugs
- Practice good hygiene – wash your hands with soap and water, use hand sanitiser that will be available onsite, cover coughs and sneezes
- Follow the instructions of the COVID marshals and signage when on site
- Ensure you 'check in' when entering an event site

## General Information

- COVID safe messages may be delivered before, during and after events. Listen out for information and follow directions.
- All messaging will be communicated by our website, social media, through commentary and signage on site at locations.
- If you have any questions, look out for one of our COVID marshals

## COVID Safe Check-in & Vaccination Status

COVID Safe Check In and full vaccination status is a requirement of entry into our event.

GoFish Nagambie will be using COVID safe check for contact tracing purposes as is a requirement for all venues and events.

When entering an event site, all people will be required to provide contact tracing information by:

- Scanning the Services Victoria QR code upon entering the site
- Provide details to be recorded on a hardcopy contact tracing form

Any person not providing their contact details will be asked to leave the event site

COVID Check-in marshals will be at the entry to all sites confirming the vaccination status of patrons.

## Cleaning

Event sites will maintain a high standard of cleaning including high touch point cleaning to reduce COVID.

## COVID Marshals

Each event site will have COVID marshals to help implement and monitor the sites COVID safe plan. All attendees will be required to follow the instructions of COVID marshals. If a COVID marshal requires assistance to manage an issue they will be assisted by the management team. A significant issue will be escalated to the Victorian Police to be handled.

## COVID Restrictions

GoFish Nagambie will monitor current COVID-19 restrictions posted by the DHHS and information contained in the COVID safe plans will be updated to align with the changes.





## THANKS TO OUR SPONSORS

### PREMIER PARTNERS



### MAJOR PARTNERS



Seymour Toyota &  
Kilmore Toyota

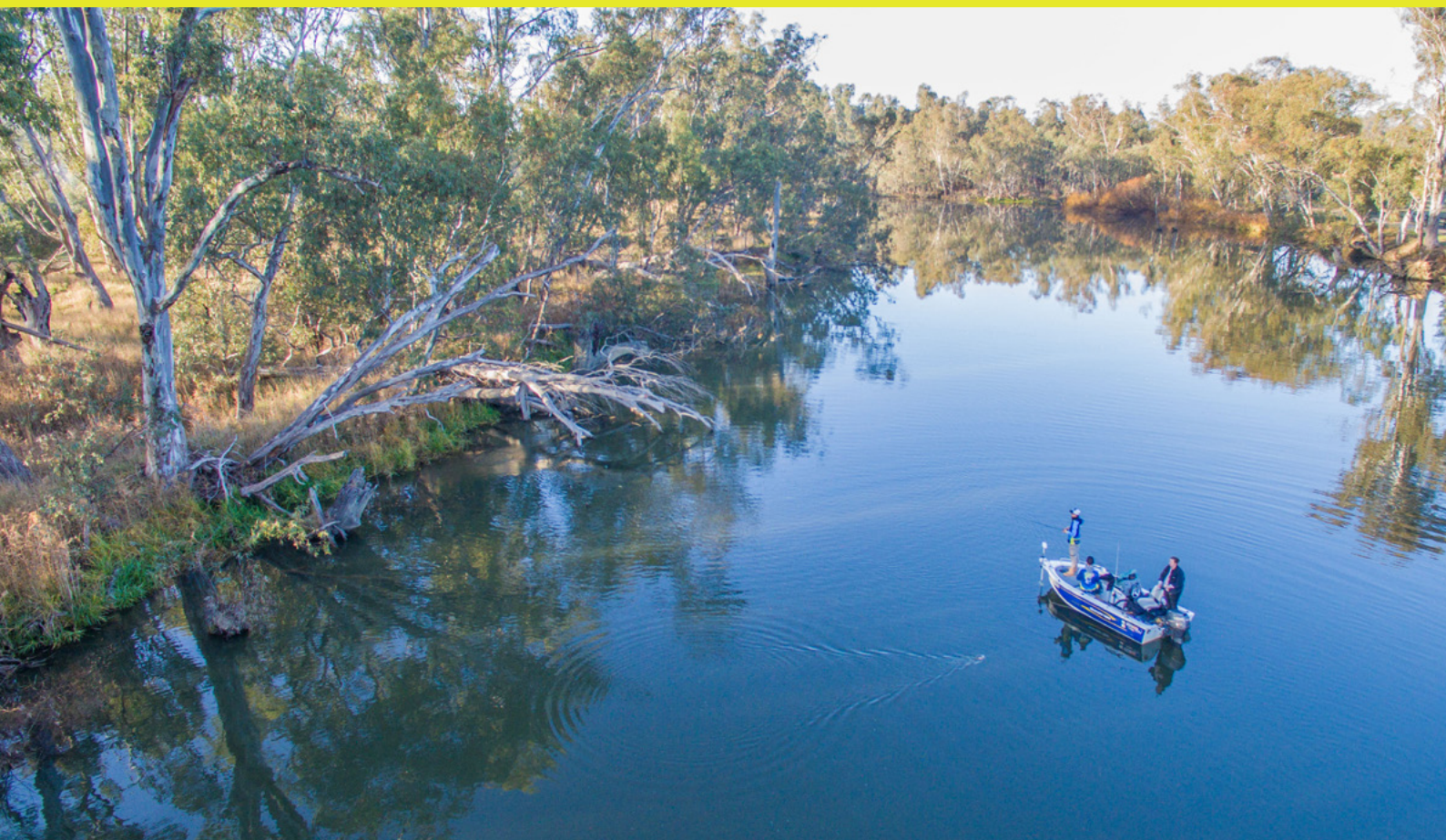


### OFFICIAL EVENT PARTNERS



### OFFICIAL CHARITY PARTNER





WELCOME MESSAGE TO GOFISH NAGAMBIE COMPETITORS	2
COVID SAFE GUIDE	3
GENERAL INFORMATION	8
COMPETITION INFORMATION	9
MEASURING & SUBMITTING TO CATCH MANAGER	12
TOURNAMENT FISHING RULES	14
ACCESS TO WATER	15
TOURNAMENT ZONE INFORMATION	18
2022 PRIZES	20
FAQS	27
CHARITY PARTNER	28

## WANT TO SHOW OFF YOUR CATCH?

Don't forget to tag us [@GoFishNagambie](#) or Hashtag [#GoFishNagambie](#) so we can check out your catch of the day!

Thank you from the [@GoFishNagambie](#) Team.

[#GoFishNagambie](#)





# TATULA

*THE ULTIMATE FOR CHASING AUSTRALIAN NATIVES*



**TATULA 100**

*BASS & YELLOWBELLY*



**TATULA 150 & 200 HD**

*BARRA & MURRAY COD*



**TATULA 300 & 400**

*BIG BAIT SPECIALISTS*

**TATULA RODS - 11 MODELS IN THE RANGE**





## LOCATION

Nagambie Lakes and Goulburn River, Victoria

## GOFISH TOURNAMENT HUB

Nagambie Lakes Regatta Centre, 66 Loddings Lane, Nagambie, Victoria

Please refer to the tournament and venue map for information about the Tournament Hub.

## KEY TIMES

DATES	ACTIVITIES	TIMES
<b>THURSDAY 10 FEBRUARY</b>	Tournament Hub Open	16:00 - 21:00
	Participant Registration	16:00 - 21:00
	Participant Briefing & Welcome Chat	19:00
<b>FRIDAY 11 FEBRUARY</b>	Participant Services/Info	From 06:00
	Tournament Open	06:30 - 17:00
	Tournament Hub & Fishing Expo Open	17:00 - 21:00
	Daily Prize Collection	17:00 - 21:00
	Presentations	19:00 - 20:00
<b>SATURDAY 12 FEBRUARY</b>	Participant Services/Info	From 06:00
	Tournament Open	06:30 - 16:00
	NOW Festival	10:00 - 16:00
	Tournament Hub Open	10:00 - 21:30
	Fishing Expo Open	15:00 - 21:00
	Daily Prize Collection	15:00 - 21:00
	Presentations	19:00 - 20:00
<b>SUNDAY 13 FEBRUARY</b>	Participant Services/Info	From 06:00
	Tournament Open	06:30 - 10:00
	Tournament Hub & Fishing Expo Open	10:00 - 14:00
	Presentations	12:00

## GETTING THERE

Travelling along the Goulburn Valley Freeway from either Shepparton or Melbourne direction, take the respective exits to Nagambie which will bring you right into the centre of town. From here, look for signs for Nagambie Lakes Leisure Park, Nagambie Lakes Regatta Centre, and the Tournament Hub to find your way to the venue to register and pick up your angler pack.

## PARKING

There is plenty of car parking at the Tournament Hub. Please follow the signs for Event Parking and directions from event marshals.

Please note the Tournament Hub is a short walk from the car park. Accessible parking is available closer to the Tournament Hub. Please speak with the event volunteers or traffic controllers who can direct you to the accessible parking area.

## LEAVING THE EVENT

The Tournament Hub will close at 2:00pm on Sunday, 13 February. Please be aware there may be some congestion exiting the venue. Please be patient and follow the direction of event volunteers and traffic controllers.

## MERCHANDISE

GoFish Nagambie Event Merchandise will be available for purchase at the Information Desk located at the Registration Marquee, or at the Tournament Hub Bar. Please note merchandise is limited so get in quick before we run out of stock!



## VOLUNTEERS

Without our awesome friendly and dedicated volunteers this event wouldn't be able to happen! Make sure you thank them when you see them around!

Keep an eye out for them in their yellow 2022 GoFish Nagambie Volunteer T-Shirts and please don't hesitate to ask them for any assistance.

## TOURNAMENT AREA

With the Nagambie Lakes and a large section of the Goulburn River making up the Tournament Zone, there is plenty of competition space to fish in! As in 2021 the Tournament Zone includes Murchison where there will be cracking opportunities to land massive fish!

The Tournament Zone includes all lakes, backwaters and small creeks and estuaries along the Goulburn River between the Murchison Recreation Reserve (North of Nagambie) and approximately 2km past the junction of Hughes Creek (South of Nagambie). The only exclusions to this are 200 meter zones either side of the Goulburn Weir wall, all irrigation supply channels/canals, and the Tahbilk Lagoon, due to its important wetlands and wildlife reserve status. The boundaries of the Tournament Zone will be marked with official GoFish signage during the competition.

Please refer to the Tournament Map for more information and to see these boundaries.

## TOURNAMENT TIMES

DATES	TIMES
<b>FRIDAY 11 FEBRUARY</b>	<b>6:30am – 5:00pm</b>
<b>SATURDAY 12 FEBRUARY</b>	<b>6:30am – 4:00pm</b>
<b>SUNDAY 13 FEBRUARY</b>	<b>6:30am – 10:00am</b>

## CATCH MANAGER

Catch Manager (see pages 13 & 14) is the website used to submit all fish caught. The website automatically records the time of the submission from the time of the photo.

If you are having issues submitting your catch, please note you will have up to an hour after tournament times to get back in to phone signal or come see us at the Tournament Hub to help submit your fish.

## EVENT SHUTTLE

A complimentary shuttle bus will operate from Thursday to Sunday during the event between the Tournament Hub and the Nagambie Town Centre.

Buses will run at 20–30-minute intervals between the below times:

DATE	START TIME	END TIME	ROUTE
<b>Thursday 10 February</b>	3.30pm	9.30pm	Tournament Hub > Nagambie Town Centre, Return
<b>Friday 11 February</b>	4.30pm	9.30pm	Tournament Hub > Nagambie Town Centre, Return
<b>Saturday 12 February</b>	10.00am	10.00pm	Tournament Hub > Nagambie Town Centre, Return
<b>Sunday 13 February</b>	9.30am	2.30pm	Tournament Hub > Nagambie Town Centre, Return

## COMPETITOR BRIEFING AND WELCOME CHAT

Before all the fun begins, it is highly recommended that participants attend the official Competitor Briefing especially if you are a first timer!

### Where:

Nautilus Marine Stage at the Tournament Hub

### When:

Thursday, 10 February at 7:00PM

This is expected to take around 30 minutes.

The Tournament Hub will be in full operation at this time, so come down and grab a drink and some food from the local vendors prior to the briefing.

## REGISTRATION

### GoFish Registration:

Thursday 10 February 4:00pm to 9:00pm

### Location:

Boat Shed at the Tournament Hub.

### What to bring to Registration:

- Confirmation of your entry purchase, either printed or on your phone
- Your Victorian Fishing Licence or seniors' card
- Proof of full vaccination

You will receive your accreditation and your Official GoFish Nagambie Brag Mat that you will require for the Tournament, so don't throw a line in before checking in at Registration!

Please email [info@gofishnagambie.com.au](mailto:info@gofishnagambie.com.au) if you cannot make it this time to arrange an alternative pick up.

---

## WOMEN IN FISHING EVENT

Friday 11th February at GoFish Nagambie Hub

5:30PM – 7:30PM

To celebrate and encourage more women in fishing, we are hosting a FREE Women in Fishing Function at GoFish Nagambie.

No matter what your experience levels we encourage you to attend. This event has both educational and recreational sessions from the industry's top anglers.

You must register to attend. To register or for more details visit [gofishtournament.com.au/nagambie/hub/wirf-function/](https://gofishtournament.com.au/nagambie/hub/wirf-function/)



## TOURNAMENT FISH

GoFish Nagambie is an environmentally sustainable Catch, Measure, Release Tournament.

## CATCH

The following fish species are plentiful in the waters of Murchison, the Goulburn River and Nagambie Lakes.

The Tournament target species are:

- Murray Cod
- Golden Perch
- Redfin
- European Carp\*

Both bait and lures are permitted for use.

## MEASURE

Using the GoFish Catch Manager, measure and submit your proof of catch to enter your caught, legal fish in to the competition.

For more information on the submission process head to Page 13 & 14.

All fish must be above the minimum legal size for the species in accordance with the Victorian Fisheries Authority to be included into the Tournament and to be eligible for prizes.

- Murray Cod 55CM
- Golden Perch 30CM

There is no size limit for European Carp and Redfin.

To assist with research into river health in the Goulbourn River and Nagambie Lake area, we encourage all fish caught to be measured and submitted no matter what the size and only those eligible in size will be included into the tournament.

## RELEASE

After carefully submitting your catch via Catch Manager, please humanely release the fish back into the water (excluding European Carp).

## EUROPEAN CARP

European Carp is a noxious species of fish and is the only species not to be released once caught and measured. Carp must be humanely killed and thoughtfully disposed of once caught.



## CATCH MANAGER

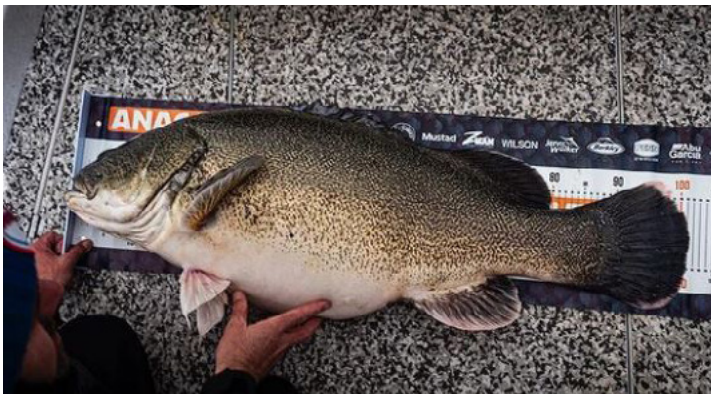
If you participated in GoFish Nagambie 2021, then you'll already be familiar with the basics of the Catch Manager. The full version will be available from Friday 11th of February and will be used for submitting all catches at this year's competition.

On this page you'll find the basic run down of how to submit a catch at GoFish Nagambie 2022, but if you have more questions, visit [catch.gofishnagambie.com.au/faq](https://catch.gofishnagambie.com.au/faq) for video walkthroughs and answers to frequently asked questions as they come up before and during the event.

## SUBMITTING A CATCH

To submit your catch to be eligible for prizes:

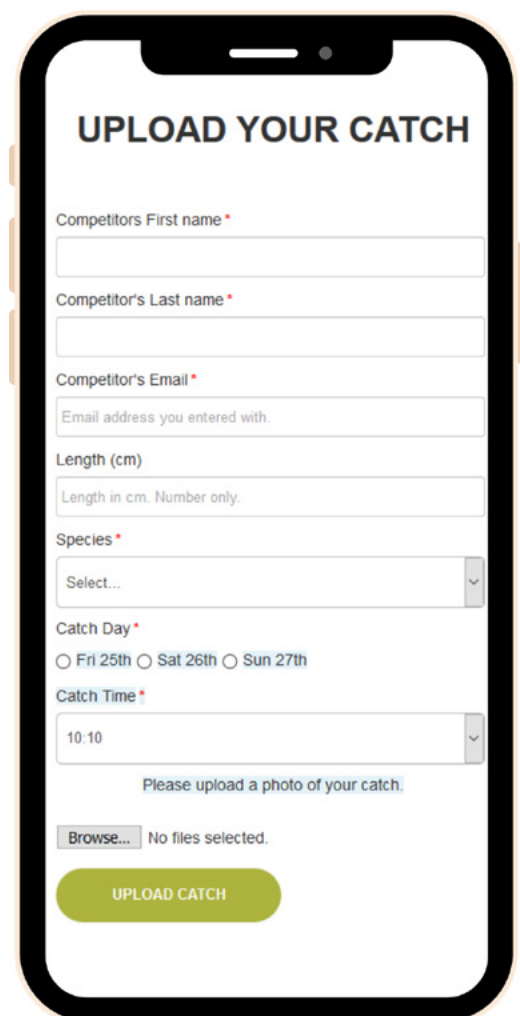
- Catch a fish!
- **Take photos of your catch against the GoFish Nagambie 2022 brag mat, make sure your competition accreditation is clearly visible and that your fish is facing head to the left.**
- Take a few photos with the fish for general bragging and social media.



- Be sure to position your catch correctly on the GoFish Nagambie Brag Mat, and include your Competitor ID (which you'll receive at registration on Thursday).
- Release your catch (except for European Carp)
- Once the adrenaline from the catch starts to wear off, scan the QR code on this page to log your catch or visit <https://catch.gofishnagambie.com.au>
- Fill out the form.
- Upload your GoFish Nagambie Brag Mat photo, and up to 4 other photos of your catch
- Submit the form.

The form will take a moment to submit while it uploads your photos. Once it completes, you'll be taken to a screen with a few options:

- **Submit another catch**  
This will take you back to the submit form once again, but save you time by populating your entry with your competitor information.
- **View Catches**  
This will take you through to a list that shows what the status of your catches are in the competition.

A screenshot of a smartphone screen displaying the "UPLOAD YOUR CATCH" form. The form includes fields for Competitor's First name, Competitor's Last name, Competitor's Email, Length (cm), Species, Catch Day (radio buttons for Fri 25th, Sat 26th, Sun 27th), and Catch Time. There is a "Please upload a photo of your catch." prompt with a "Browse..." button and a file selection status "No files selected." At the bottom is a green "UPLOAD CATCH" button.

### Example of the Upload Your Catch form.

#### Remember:

- Use the name you registered with to avoid problems with your entries.
- Use the email address your ticket is registered with.
- Make sure all the required fields are completed (indicated by \*)

## FAMILY ENTRIES

- For most competitors, the "Submit another catch" option will speed up your logging of catches as you'll not need to reenter all your information each time if you've left your browser open at that screen between submitting catches.
- For families with multiple competitors using the one device, the Catch Manager allows you to enter multiple competitors using one email address for everyone.
- So if it's Dad, Mum and two kids, simply use the one email address for all 4 entries, and then put the individual first names for each competitor in when you are assigning a catch to them.

## VIEWING YOUR CATCHES

- When you go to view your catches, you'll see a list of all the catches you've successfully logged, and what their status is.
- If you're entering for a family, catches for each member will be grouped down the page.

## CATCH VERIFICATION

- When you've submitted your catch, it will show as pending until the GoFish Competition Team take a look at it and confirm it's met all the competition criteria.
- Pending - You've recently submitted the catch, and it's in the queue for the GoFish team to verify the details.
- In Review - Your catch is being looked at by the GoFish team.
- Verified - Your catch has been verified as a valid competition entry.
- Adjusted - Your catch was verified, but an aspect of the catch has been adjusted, such as correcting the length of the catch.
- Rejected - Check the catch for more details as to why it might have been rejected: Examples might include Accreditation missing, unacceptable size etc.
- See the Tournament Fishing Rules section of this guide on Page 15 for more information to make sure your catch counts.

## TROUBLESHOOTING

The Catch Manager has been designed this year to avoid some of the most common issues encountered in 2021. Here are the updated answers for 2022 on some of the most common questions we received.

## WHAT HAPPENS IF I DROP OUT OF SERVICES OR CAN'T GET RECEPTION ON THE WATER AND CAN'T SUBMIT MY FISH?

No problem! The welfare of the fish is the first priority, so you only need to take the photos while managing the fish. You can then upload your catch any time during the day. The upload process will log the time it's submitted, but also pick up the time the photos were taken from the uploads. So, if you've got no service in parts of the lake, you can upload all your catches in one batch when you return to the Tournament Hub.

Please note you will have a grace period of an hour after the tournament close time each day to upload your fish.

## WHAT HAPPENS IF THE CATCH MANAGER ISN'T WORKING WHEN I CATCH A FISH?

Based on the catch patterns in 2021, we're expecting catches will be logged at an even pace during the competition, and there's not going to be any outages on the website itself.

Mobile phone coverage across the Tournament Zone however is a different matter, so as mentioned above you will be able to upload your catches at any time when you do regain coverage, such as back at the Information Tent in the Tournament Hub. You will have a grace period of an hour after the tournament close time each day to upload your fish.

## WHAT ARE THE DAILY CUT OFF TIMES FOR SUBMITTING MY CATCHES TO THE CATCH MANAGER?

You have up to an hour after tournament times to submit your catch for it to be counted in the daily tournament catches.

DATES	TIMES	SUBMISSION GRACE PERIOD
FRIDAY 11 FEBRUARY	6:30am – 5:00pm	5:00pm – 6:00pm
SATURDAY 12 FEBRUARY	6:30am – 4:00pm	4:00pm – 5:00pm
SUNDAY 13 FEBRUARY	6:30am – 10:00am	10:00am – 11:00am

## IF I STILL HAVE PROBLEMS UPLOADING A CATCH, WHAT CAN I DO?

If you are having issues submitting, please note you will have up to an hour after tournament times to come see us at the Information Tent at the Tournament Hub to get further help submit your catch in time for it to be counted in the daily draws.



# TOURNAMENT FISHING RULES



**GoFish Nagambie has its own rules for the Tournament, however participants must also abide by Victorian Fishing Regulations. All these rules and regulations apply throughout the entire Tournament.**

## GOFISH NAGAMBIE RULES:

GoFish Nagambie is a "catch and release" Tournament. All fish caught must be returned to the water (excluding noxious species [European Carp]).

- Your accreditation must be present in the photo of the submitted fish. Fish submitted without accreditation will be disqualified
- Gaffs cannot be used, only fish friendly (knotless) landing nets may be used.
- Fish pre-caught and tethered, or caught in nets, are not permissible and competitors will be referred to the Fisheries Officers.
- All participants are required to have access to a smartphone with access Catch Manager to utilise the GoFish Challenge for the participant submission entries of the fish caught. The GoFish Nagambie Catch Manager must be used for all submissions.
- Participants can only fish during the competition times; any fish caught outside of these times won't be eligible.
- All fish must be caught within the tournament boundaries, any fish caught outside of these boundaries are ineligible for the competition

- All competitors between the ages of 18 and 70 must hold a current Victorian Fishing Licence.
- Winners must present their official GoFish Nagambie Accreditation to show they are a legal competitor.
- All participants must observe the Victorian Recreation Fishing Regulations.
- Anglers who use illegal means or equipment to catch fish will be disqualified from the Tournament. The GoFish Nagambie organisers, officials and representatives reserve the right to inspect and police equipment, bait and fishing methods used.
- The decision of the GoFish Nagambie organisers is final, no discussion will be entered into. In the instance that sufficient evidence of fraud or cheating has occurred, the participant in question will be disqualified from the competition.
- All GoFish Nagambie Competitors must be fully vaccinated against COVID-19 or have a valid exception.

Please note event marshals will be patrolling the area, everyone who is fishing in the competition must have their accreditation on them. Anyone who is caught without an accreditation will not be able to qualify for any type of prize.

A full copy of the official GoFish Nagambie Tournament Rules and Regulations are available via the website [here](#).

GoFish Nagambie reserves the rights to update or amend the rules and regulations at any time.



**Go Fishing Victoria**  
More people fishing, more often

Download the FREE VicFishing app featuring more than 70 species found in Victoria's waterways, key information to help identify your catch and confirm size and bag limits and the latest information regarding access.

There is also a 'Can I Fish Here?' function, which uses a smart phone's GPS to determine whether you are in or approaching a marine park or sanctuary.

You can also buy your recreational fishing license [here](#) and connect to key contacts such as the Victorian Fisheries Authority's illegal reporting fishing line (13FISH), Customer Service and Water Police.

Download the App and show your phone to one of the team and the Victorian Fisheries Marquee to collect a prize.



### BOAT LAUNCHING

To ensure that all anglers are able to maximise their time fishing on the water there are guidelines below that everyone needs to adhere to when launching a boat.

#### GENERAL BOAT LAUNCHING PRACTISES

- Preparing your Boat – ensure you have everything prepared before arriving at the boat ramp. Make sure all your tackle, eskies and gear are in the boat. Upon arrival, prepare the boat as quickly as possible for launching. Do not prepare your boat whilst on or blocking the ramp for others' use.
- Launching– launch your boat as quickly as possible and move your vehicle off the boat ramp straight away to allow access for other users.
- Parking – There are designated parking areas at each Boat Ramp – look out for the parking signs. Please only park in designated areas and avoid blocking other vehicles or trailers in or blocking access roads and tracks.

Refer to the Tournament Map for Boat Ramp locations and important information.

### KAYAK FISHING

For kayak fishers, you will be able to launch your kayak from wherever you see fit on public land, however the GoFish team have found some great spots for kayak launching with good parking and easy access to the water, and away from busy boat ramps. Please refer to the Tournament Map for these locations.

All kayak fishers will need to wear a lifejacket in line with Maritime Safety Victoria rules.

### BANK FISHING

If you're a fisho getting ready for some bank fishing action, along with the recommended public bank fishing locations, the GoFish team have secured permission from private landowners to access some exclusive waterfront properties for all bank fishing competitors. These private land sites will be opened to the public on competition days only from 6:00am and all competitors must be vacated by 5:30pm on Friday, 4:30pm on Saturday, and 10:30am on Sunday.

The following maps detail the access for each bank fishing private land site. Please ensure you follow all signage at these sites and do not open gates or jump fences



**HONDA**  
**MARINE**

**“Reliability is everything.”**

- Andrew Ettingshausen

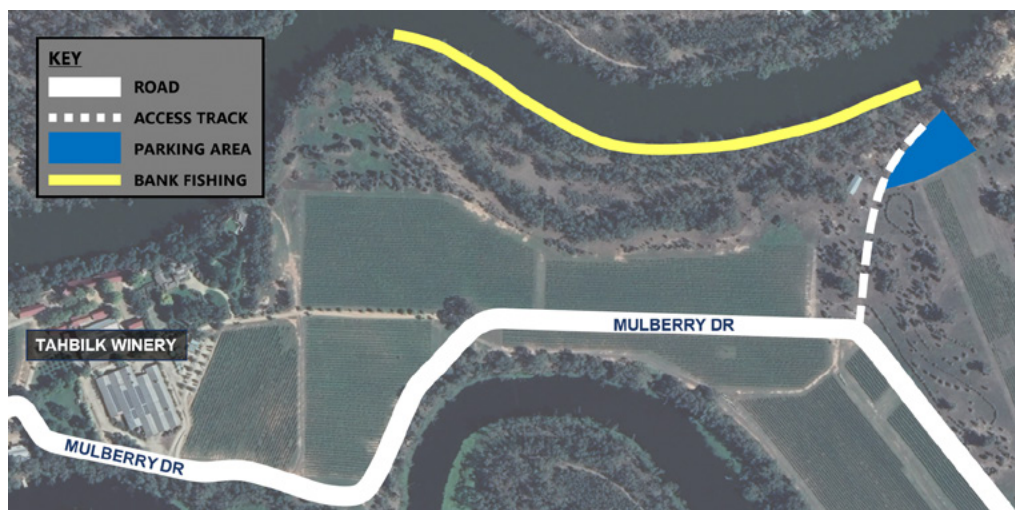


**Australia's only 7-Year Domestic and 3-Year Commercial Warranty on all outboards.**

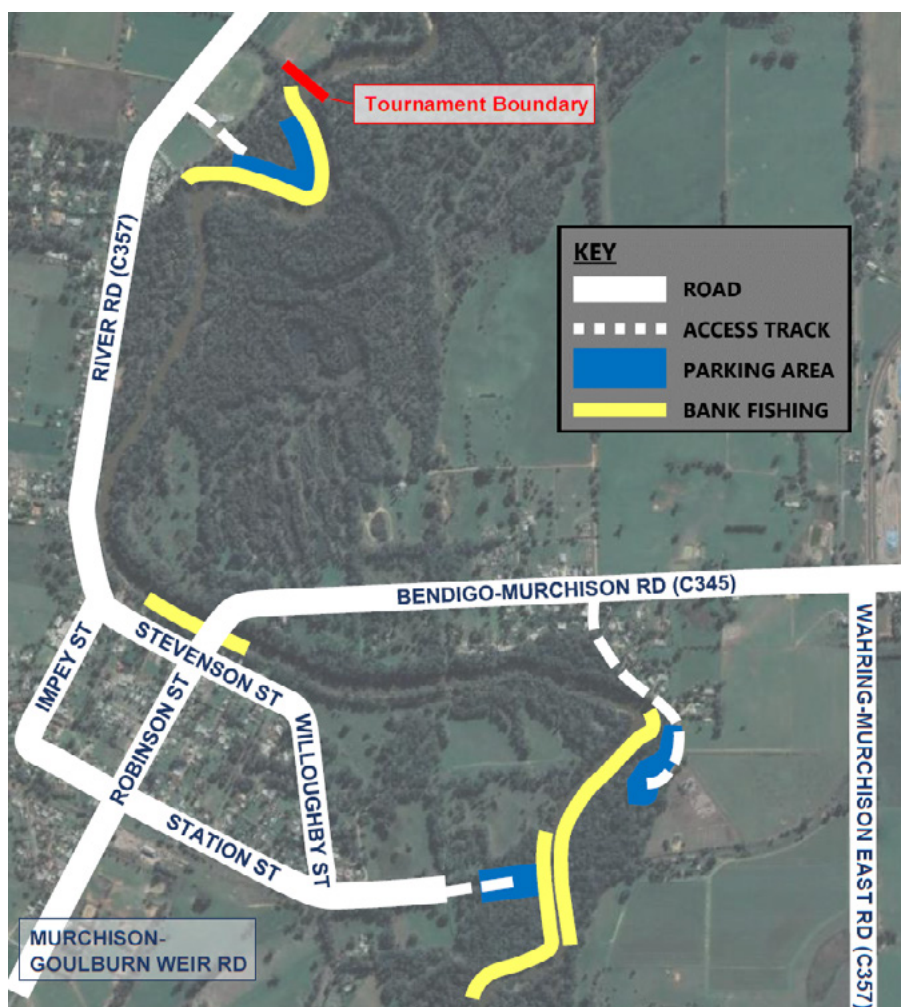
\*Honda is offering a 5 + 2 = 7 years domestic and 1 + 2 = 3 years commercial warranty. The additional 2 years are based on the following conditions: The Outboard must either be sold and set up by an authorised Honda Marine dealer or be sold by an authorised sales agent for Honda Marine Australia and set up in accordance with the instructions in the Product Registration & Set-up Guide (if applicable), in conjunction with the Owner's Manual. The Outboard must be serviced for the entire warranty period by an authorised Honda Marine dealer, in line with the recommended service schedule, using genuine Honda parts and lubricants. Visit [marine.honda.com.au](http://marine.honda.com.au) for full terms and conditions.



## TAHBILK



## MURCHISON

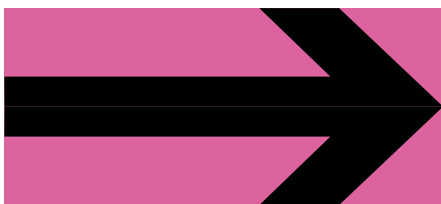




## DIRECTIONAL SIGNAGE

Directional Signage will be in certain locations to assist finding Boat Ramps, suggested Kayak locations, Parking, and some Bank Fishing areas – keep an eye out along the road for these signs. Once entering some locations, Pink Directional Arrows may be used to advise of the route to Boat Ramps, suggested Kayak locations, Parking, and some Bank Fishing areas. Where these arrows are displayed, please follow them, and avoid travelling off these marked directions.

An example of these Pink Directional Arrows is below:



## MEDICAL/EMERGENCY

There will be full medical facilities available from St John Ambulance in the Festival Hub during all Hub opening hours. Please refer to the Venue Map for the location of the First Aid. If you have any difficulty finding First Aid, please don't hesitate to ask any of our friendly staff members or event marshals for assistance.

If there is a life-threatening condition, please contact 000 immediately.

## WATERWAYS REGULATIONS


The Victorian Water Police and Marine Safety Victoria will this year be enforcing a 5-knot speed limit within the competition area of GoFish Nagambie to ensure the safety of all participants and fellow waterway users over the weekend. This speed limit will exclude Nagambie Lake which will remain as a permitted waterski area.



Also available in Prescription [toniceyewear.com.au](http://toniceyewear.com.au)  

AVAILABLE AT SELECTED  
BOATING, FISHING &  
CAMPING STORES

**ANACONDA**

  
**BrightEyes**  
Hats • Thongs • Sunglasses

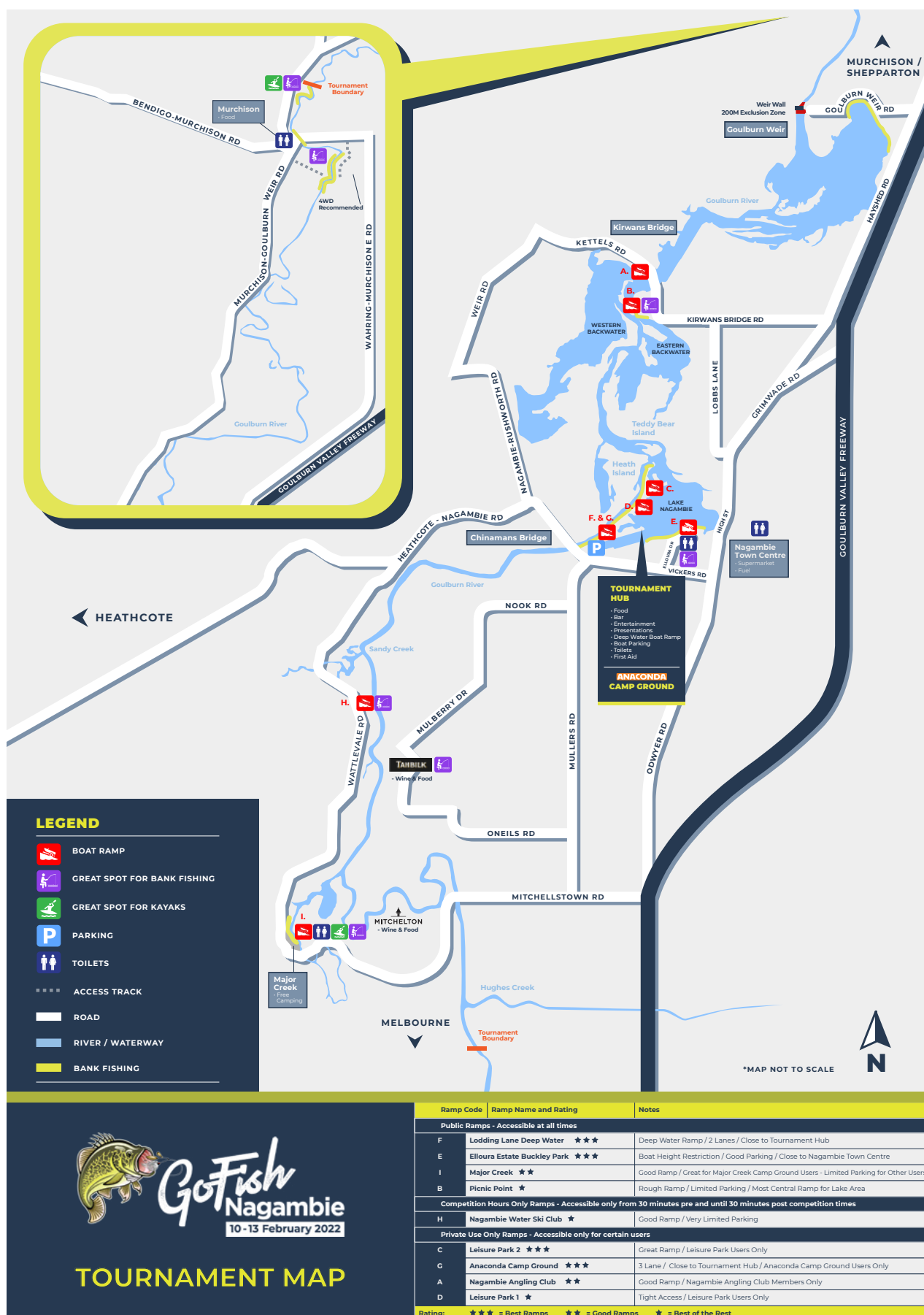
  
**Compleat  
Angler**

*Spot On.*  
Fishing Tackle

**TACKLE  
WORLD**

"OUTBACK - GREEN MIRROR"

# TOURNAMENT ZONE & INFORMATION



# TOURNAMENT ZONE & INFORMATION

## LARGEST FISH

- Largest (longest) fish caught in the competition
- Eligible species include Murray Cod, Golden Perch, Redfin (Junior only) and European Carp.
- Separate divisions for Open and Junior
- If multiple fish of the same size are caught, the first fish entered will be the winner.

## ANACONDA CARP O'CLOCK, COD O'CLOCK & HONDA MARINE GOLDEN HOUR

- At a random hour a random length of fish will be selected to become Anaconda Carp O'Clock (European Carp), Cod O'Clock (Murray Cod) and Honda Marine Golden Hour (Golden Perch).
- In this hour, the first person to catch a fish of the nominated size for each species will be the winner of the daily Anaconda Carp O'Clock, Cod O'Clock or Honda Marine Golden hour prize.
- In the case that a fish of the exact size isn't caught, the first person to catch the fish that is next closest to the nominated size will be declared the winner.
- If multiple fish of the nominated size are caught, the first fish entered will be the winner.
- Sizes and times are decided prior to the event but aren't revealed until the prize draw in the evening of each day of competition.
- Open competitors only

## DAILY LUCKY DOOR PRIZE

- All competitors entered in the competition will be eligible to win a lucky door prize courtesy of our sponsors.
- Each day of the tournament, 100 competitors will be selected randomly to receive a lucky door prize.
- Prizes can be collected on the day from the Prize Collection point at the GoFish Tournament Hub between end of tournament hours and close of the festival, each day of the competition.
- Participants will be required to present their accreditation to staff to collect their prize.
- All participants eligible

## LOWRANCE GRAND SLAM

- To qualify, a fish of every tournament species (Murray Cod, Golden Perch, European Carp, Redfin) must be entered and approved over the duration of the tournament
- First prize goes to the winner with the greatest cumulative length of their best size of each species caught.
- Further prizes will be awarded through a random draw of all qualifying participants.
- All participants eligible

## SPECIES DRAW

- Every entered and approved catch of each species enters you into a random draw for that species (i.e. if you submit 3 Golden Perch, you will have three entries to the Golden Perch draw that day)
- Competitions are day specific and will be drawn each evening of the competition
- There will be multiple prize draws for each species of fish.
- Separate draws for Open and Junior
- Participants must be present at the draw to claim this prize

## LOWRANCE DONUT PRIZE

- Randomly drawn each day from all competitors that have not entered any fish to the competition.
- All participants eligible

## WOMEN IN FISHING

- Randomly Drawn from all female competitors
- One winner drawn on each day of the Tournament

## PRIZE & CATEGORY DRAW DATES & TIMES

- Prizes will be announced at the GoFish Festival hub on the following dates and times:
  - Friday 11th – 7:00pm
  - Saturday 12th – 7:00pm
  - Sunday 13th – 12:00pm
- Largest Fish and Lowrance Grand Slam categories will be announced during the presentations on Sunday 13 February. Cod O'Clock, Anaconda Carp O'Clock, Honda Marine Golden Hour, Lowrance Grand Slam, will be announced on the day of the session as well as daily draw prizes, attendee prizes and the daily species prizes.

## PRIZE COLLECTION

- All small prizes are available for collection and take home on the day of the prize draw. Prizes will be held for collection until 2:00pm on Sunday 13 February, except were stated otherwise. Large prizes such as boats and caravans may be subject to collection from a local dealership which will be decided on a case-by-case basis. For cash prizes, money will be deposited to the recipients nominated bank account within 45 days of the tournament closing. Please note participants will be required to provide their tournament accreditation and may be required to show proof of ID when collecting prizes.

### FINAL PRESENTATION

The Final Presentation will commence on the Nautilus Marine Main Stage at the Festival Hub, at 12:00pm on Sunday 13th February.

### DAILY PRESENTATIONS

Don't miss out on the chance of winning our huge Daily prizes!

Make sure you attend Prize Presentations at 7:00pm each day at the Tournament Hub (12:00pm Sunday). You can visit our wide variety of exhibitors and explore the exciting entertainment of the Tournament Hub each night whilst waiting for your chance to win!

### DAILY LUCKY DOOR PRIZE – “100 DAILY PRIZES”

All competitors entered in the competition will be eligible to win a Lucky Door Prize courtesy of our sponsor and partner businesses across the three days of the competition. Each day of the Tournament, 100 competitors who have registered with the own unique competitor app will be selected randomly to receive a Lucky Door Prize. To find out if you have won these prizes you must come back to the festival hub to look on the prize board! Please note the “100 Daily ” and “Random Draw prizes” must be collected during the event. Prizes will not be able to be claimed after the tournament closes. Prizes can be collected from the Prize Collection tent during the Tournament Hub operating hours each day. Participants will be required to present their GoFish Nagambie Accreditation to staff to collect their prize. Please see full Prize table on pages 24-27.



**GO ADVENTURE**  
Nagambie

*Creating fun for everyone on the water!*

**Tinnies - kayaks - canoes - pedal boats - hobie boards - stand up paddle boards - luxury pontoon boat**

Enjoy beautiful Lake Nagambie and the pristine Goulburn River on one of our many watercraft. Operating out of the Nagambie Lakes Regatta Centre - book in person or online via our website.

Ph: 0449 504 398

[bookings@goadventurenagambie.com.au](mailto:bookings@goadventurenagambie.com.au)

[www.goadventurenagambie.com.au](http://www.goadventurenagambie.com.au)



FRIDAY DAILY PRIZES			
AGE DIVISION	FISH BREED	CATEGORY	PRIZE DETAIL
ALL	All	Frogleys Sticker Promotion	Frogleys Prize Pack
		100 Daily Prize	Prize Packs
		Women in Sport Prize	Daiwa Prize Pack
		Lowrance Donut Prize	Lowrance Sounder
	European Carp	Anaconda Carp O'Clock	Anaconda Prize Pack
	Golden Perch	Honda Marine Golden Hour	Honda Marine Boat Engine
	Murray Cod	Cod O'Clock	\$10,000
JUNIOR	European Carp	Random from submitted in species	Shimano Prize Pack
	Redfin	Random from submitted in species	Shimano Prize Pack
	Golden Perch	Random from submitted in species	Shimano Prize Pack
	Murray Cod	Random from submitted in species	Shimano Prize Pack
JUNIOR KAYAK	Any Species	Random from submitted in species	Shimano Prize Pack
JUNIOR LAND		Random from submitted in species	Shimano Prize Pack
OPEN	Redfin	Random from submitted in species	Shimano Prize Pack
		Random from submitted in species	Shimano Prize Pack
		Random from submitted in species	Shimano Prize Pack
	European Carp	Random from submitted in species	Frogleys Fishing Rod
		Random from submitted in species	Frogleys Fishing Rod
		Random from submitted in species	Frogleys Fishing Rod
	Golden Perch	Random from submitted in species	Shimano Prize Pack
		Random from submitted in species	Shimano Prize Pack
		Random from submitted in species	Shimano Prize Pack
	Murray Cod	Random from submitted in species	Daiwa Prize Pack
		Random from submitted in species	Daiwa Prize Pack
		Random from submitted in species	Daiwa Prize Pack
OPEN KAYAK	Any Species	Random from submitted in species	Pure Fishing Prize Pack
		Random from submitted in species	Pure Fishing Prize Pack
		Random from submitted in species	Pure Fishing Prize Pack
		Random from submitted in species	Pure Fishing Prize Pack
OPEN LAND	Any Species	Random from submitted in species	TONIC Polarised Eyewear Package
		Random from submitted in species	TONIC Polarised Eyewear Package
		Random from submitted in species	TONIC Polarised Eyewear Package
		Random from submitted in species	TONIC Polarised Eyewear Package

SATURDAY DAILY PRIZES			
AGE DIVISION	FISH BREED	CATEGORY	PRIZE DETAIL
ALL	All	Fogleys Sticker Promotion	Fogleys Prize Pack
		Anaconda 100 Daily Prize	Daily Prizes brought to you by Anaconda
		Women in Sport Prize	Daiwa Prize Pack
		Lowrance Donut Prize	Lowrance Sounder
	European Carp	Anaconda Carp O'Clock	Anaconda Prize Pack
	Golden Perch	Honda Marine Golden Hour	Honda Marine Boat Engine
	Murray Cod	Cod O'Clock	\$10,000
JUNIOR	European Carp	Random from submitted in species	Shimano Prize Pack
	Redfin	Random from submitted in species	Shimano Prize Pack
	Golden Perch	Random from submitted in species	Shimano Prize Pack
	Murray Cod	Random from submitted in species	Shimano Prize Pack
JUNIOR KAYAK	Any Species	Random from submitted in species	Shimano Prize Pack
JUNIOR LAND		Random from submitted in species	Shimano Prize Pack
OPEN	Redfin	Random from submitted in species	Shimano Prize Pack
		Random from submitted in species	Shimano Prize Pack
		Random from submitted in species	Shimano Prize Pack
	European Carp	Random from submitted in species	Fogleys Fishing Rod
		Random from submitted in species	Fogleys Fishing Rod
		Random from submitted in species	Fogleys Fishing Rod
	Golden Perch	Random from submitted in species	Shimano Prize Pack
		Random from submitted in species	Shimano Prize Pack
		Random from submitted in species	Shimano Prize Pack
	Murray Cod	Random from submitted in species	Daiwa Prize Pack
		Random from submitted in species	Daiwa Prize Pack
		Random from submitted in species	Daiwa Prize Pack
OPEN KAYAK	Any Species	Random from submitted in species	Pure Fishing Prize Pack
		Random from submitted in species	Pure Fishing Prize Pack
		Random from submitted in species	Pure Fishing Prize Pack
		Random from submitted in species	Pure Fishing Prize Pack
OPEN LAND	Any Species	Random from submitted in species	Pure Fishing Prize Pack
		Random from submitted in species	TONIC Polarised Eyewear Package
		Random from submitted in species	TONIC Polarised Eyewear Package
		Random from submitted in species	TONIC Polarised Eyewear Package

SUNDAY DAILY PRIZES			
AGE DIVISION	FISH BREED	CATEGORY	PRIZE DETAIL
ALL	All	Fogleys Sticker Promotion	Fogleys Prize Pack
		Anaconda 100 Daily Prize	Daily Prizes brought to you by Anaconda
		Women in Sport Prize	Daiwa Prize Pack
		Anaconda Carp O'Clock	Anaconda Prize Pack
		Honda Marine Golden Hour	Honda Marine Boat Engine
		Lowrance Donut Prize	Lowrance Sounder
	Murray Cod	Cod O'Clock	\$10,000
JUNIOR	European Carp	Random from submitted in species	Shimano Prize Pack
	Redfin	Random from submitted in species	Shimano Prize Pack
	Golden Perch	Random from submitted in species	Shimano Prize Pack
	Murray Cod	Random from submitted in species	Shimano Prize Pack
JUNIOR KAYAK	Any Species	Random from submitted in species	Shimano Prize Pack
JUNIOR LAND		Random from submitted in species	Shimano Prize Pack
OPEN	Redfin	Random from submitted in species	Shimano Prize Pack
		Random from submitted in species	Shimano Prize Pack
		Random from submitted in species	Shimano Prize Pack
	European Carp	Random from submitted in species	Fogleys Fishing Rod
		Random from submitted in species	Fogleys Fishing Rod
		Random from submitted in species	Fogleys Fishing Rod
	Golden Perch	Random from submitted in species	Shimano Prize Pack
		Random from submitted in species	Shimano Prize Pack
		Random from submitted in species	Shimano Prize Pack
	Murray Cod	Random from submitted in species	Daiwa Prize Pack
		Random from submitted in species	Daiwa Prize Pack
		Random from submitted in species	Daiwa Prize Pack
OPEN KAYAK	Any Species	Random from submitted in species	Pure Fishing Prize Pack
		Random from submitted in species	Pure Fishing Prize Pack
		Random from submitted in species	Pure Fishing Prize Pack
		Random from submitted in species	Pure Fishing Prize Pack
OPEN LAND	Any Species	Random from submitted in species	TONIC Polarised Eyewear Package
		Random from submitted in species	TONIC Polarised Eyewear Package
		Random from submitted in species	TONIC Polarised Eyewear Package
		Random from submitted in species	TONIC Polarised Eyewear Package



OVERALL COMPETITION PRIZES			
AGE DIVISION	FISH BREED	CATEGORY	PRIZE DETAIL
JUNIOR	European Carp	Biggest Overall 3rd	Shimano Prize Pack
		Biggest Overall 2nd	Shimano Prize Pack
		Biggest Overall 1st	Shimano Prize Pack
	Redfin	Biggest Overall 3rd	Shimano Prize Pack
		Biggest Overall 2nd	Shimano Prize Pack
		Biggest Overall 1st	Shimano Prize Pack
	Golden Perch	Biggest Overall 3rd	Shimano Prize Pack
		Biggest Overall 2nd	Shimano Prize Pack
		Biggest Overall 1st	Shimano Prize Pack
	Murray Cod	Biggest Overall 3rd	Shimano Prize Pack
		Biggest Overall 2nd	Shimano Prize Pack
		Biggest Overall 1st	Shimano Prize Pack
	Grand Slam	Submitting 1 of each species enters you into random draw - Runner Up	Infinti - Trolling Motors
		Combined best Length of each species	Lowrance Ghost Trolling Motor
	Carp	Biggest Overall 5th	Anaconda Gift Cards
		Biggest Overall 4th	Anaconda Gift Cards
		Biggest Overall 3rd	Anaconda Gift Cards
		Biggest Overall 2nd	\$500.00
		Biggest Overall 1st	\$1,000.00
	Golden Perch	Biggest Overall 10th	Pure Fishing Prize Pack
		Biggest Overall 9th	Pure Fishing Prize Pack
		Biggest Overall 8th	Anaconda Gift Cards
		Biggest Overall 7th	Anaconda Gift Cards
		Biggest Overall 6th	\$500.00
		Biggest Overall 5th	\$1,000.00
		Biggest Overall 4th	\$1,500.00
		Biggest Overall 3rd	\$2,000.00
		Biggest Overall 2nd	\$3,500.00
		Biggest Overall 1st	\$8,000.00
	Murray Cod	Biggest Overall 10th	Prize Pack
		Biggest Overall 9th	Prize Pack
		Biggest Overall 8th	Anaconda Gift Cards
		Biggest Overall 7th	Anaconda Gift Cards
		Biggest Overall 6th	\$1,000.00
		Biggest Overall 5th	\$2,000.00
		Biggest Overall 4th	\$3,000.00
		Biggest Overall 3rd	\$6,000.00
		Biggest Overall 2nd	\$10,000.00
		Biggest Overall 1st	\$80,000.00



# ***THE BEER*** *for* ***UP HERE***



DON'T DRINK  
AND DRIVE

FAR NORTH QUEENSLAND



INTRODUCING THE NEW

# *VERITAS* PLX

TOURNAMENT EDITION

**TAKING  
VERITAS TO  
THE NEXT  
LEVEL**

ANATOMY OF THE NEW

## *VERITAS* PLX

TOURNAMENT EDITION

Powerlux®  
Composites 100

Powerlux® 100 blanks are 5% lighter and 15% stronger than standard Veritas range.

High density EVA grips for greater weather and wear resistance.

Fuji® stainless steel KR frame guides with alconite inserts for perfection in line management.

Ergonomic Abu Garcia custom designed reel seats for added sensitivity.

Raw matte blank finish and minimalist gloss bindings for a slick look on the water.

From \$199.99 RRP



## When should I arrive?

Thursday, 10 February by 6:00pm.

## What happens if I arrive late?

If you arrive late ensure you head to Registration to collect your Accreditation and Brag Mat you cannot compete in the Tournament until you have done this.

Please email [info@gofishnagambie.com.au](mailto:info@gofishnagambie.com.au) if you are unable to attend on Thursday, 10 February to arrange an alternative pick up.

## Can I launch at any boat ramp?

Yes, you can launch your boat at any boat ramp that is available. Keep an eye out for GoFish Nagambie Boat Ramp signs!

Please note that boat ramps located on private land will not be accessible until 6:00am each morning

## Can we launch before Competition time?

Yes, you can be in the competition area before the competition time however you must have checked in and collected your registration pack, and you are not allowed to commence fishing until competition start time commences. The GoFish Nagambie Catch Manager automatically records the time, date and location of the catch.

## Where is the closest place to buy bait and lures?

Come and support our GoFish partners and exhibitors down in the Tournament Hub. There will be bait and lures in the expo area where you will be able to purchase supplies from.

## What if I need help using the GoFish Catch Manager?

Support services will be on site in the Tournament Hub.

## What happens if I don't have a mobile phone to run the app?

To compete in this Tournament all participants are required to have access to a smart phone to utilise the Catch Manager. For the participant submission of entries of the fish caught. (It is not necessary for the participant to own a smart phone, but to have access to a smart phone to utilize Catch Manager. Catch Manager will allow you to upload a fish entering your own unique details.

## What happens after each day of competition?

Come support our exhibitors at the Tournament Hub.

## What happens if I can't attend the presentation, but I win a prize?

If you win a prize but are not present, we will contact you directly to claim your prize, with the exclusion of the "100 Daily" and "Random draw prizes" you must be present to collect these prizes.

## What's the biggest prize?

There is a whopping \$80,000 for the Biggest Overall Murray Cod.

## What if I win a random daily prize or 100 daily prizes but am not there to collect it?

Competitors have until tournament closing (Sunday) to claim their random prize from the prize collection tent. All prizes that are not picked up during the competition will be unable to claim. Please note you must bring your accreditation to claim your prize.

## What if I submit under the wrong category/Name?

If your fish has been submitted under the wrong account it will automatically be disqualified from its category. If you are sharing the one device, make sure you upload the caught fish under the right name. If you do accidentally submit your fish under the wrong name, please visit the catch manager tent.

## Am I allowed to leave my boat on the water?

Yes, boats can be left on the water. If you choose to leave your boat on the water, it is at your own discretion. We advise that you take valuable belongings with you if you leave your boat.

## Do I need to have my accreditation with me when fishing?

Yes your accreditation must be present in the photo of the submitted fish. Fish submitted without accreditation will be disqualified. Event marshals will also be patrolling the area, everyone who is fishing in the competition must have their accreditation on them. Anyone who is caught without an accreditation will not be able to qualify for any type of prize.

### MS GOFISH NAGAMBIE RAFFLE

MS is proud to be the official charity partner of GoFish Nagambie for the fourth year in 2022.

Multiple sclerosis is a disease of the central nervous system. There is no cure. It can strike anyone at any time and the symptoms vary widely.

The **MS GoFish Nagambie Raffle** raises vital funds to provide support services to people living with multiple sclerosis, ensuring that no one faces this debilitating disease alone.

The MS Raffle gives punters the chance to take home the major prize - a **Stacer 429 Rampage**, complete with 50HP Mercury outboard, matched aluminium Stacer trailer and Lowrance HDS-7 Live installed along with 12-months Nautilus Marine Insurance (plus boat and trailer registration for the first 12 months). The whole prize package is valued over \$19K!

Second prize is a **Lowrance HDS-9 Live with Active Imaging** and third prize is \$500 to spend on award-winning wine from the Cellar Door at Mitchelton.

Look out for the MS marquee in the Tournament Hub to check out these great prizes and get your raffle tickets. Raffle tickets are \$10 each or 3 for \$20.

These amazing prizes are up for grabs thanks to the generosity of Stacer, Lowrance, Nautilus Marine Insurance and Mitchelton.

**Don't miss your chance to WIN!**

Buy your tickets at [www.raffletix.com.au/msgofishnagambieraffle](http://www.raffletix.com.au/msgofishnagambieraffle)



Scan the code to buy tickets.



Win a **Stacer** tinnie package!  
+ other great prizes from  
**Lowrance & Mitchelton Wines**





## This All-New LandCruiser 300 drives us home

The All-New LandCruiser 300 is as powerful, capable and durable as ever. It is built on the legacy that began with supporting the construction of the Snowy Hydro in 1958. But today's LandCruiser is more than a survival tool for a tough and uncompromising country. It is the evolution of a legend that's over 60 years in the making. So whether you are powering over logs or towing out of bogs, the All-New LandCruiser 300 will always drive you home. Get behind the wheel of an icon. Book a test drive today.  
[toyota.com.au/all-new-landcruiser-300](http://toyota.com.au/all-new-landcruiser-300)

**Seymour Toyota**  
21 Emily St,  
Seymour  
T 03 5735 3000  
LMCT808  
[seymourtoyota.com.au](http://seymourtoyota.com.au)

**Kilmore Toyota**  
140 Powlett St,  
Kilmore  
T 03 5734 3900  
LMCT808  
[kilmoretoyota.com.au](http://kilmoretoyota.com.au)

**OH WHAT A FEELING**



# NOW ONLINE

BULLBARS SUSPENSION CAMPING GEAR LIGHTING  
RECOVERY KITS DUAL BATTERIES

T: 03 5734 3970 [4X4EXTRASONLINE.COM.AU](http://4X4EXTRASONLINE.COM.AU)

142 POWLETT ST, KILMORE

## THE FAMILY-SIZED SUV

PETROL  
2WD AUTO  
FROM  
JUST **\$36,990\***  
DRIVEAWAY



**+\$1000**  
FUEL CARD **D90**

\*TMCs apply. Available on new stock vehicles.

CORNER OF WHITE AND BROADHURST ST, KILMORE

KILMORE T: 03 5734 3980

[SALES@KILMORELDV.COM.AU](mailto:SALES@KILMORELDV.COM.AU)



**GET YOUR TICKETS TO THE**



**EVENT CENTRAL AT CARIBBEAN PARK,  
SCORESBY**

**18 - 20 FEB 2022**

**BUY NOW**



**TICKET HOLDERS RECEIVE FREE PARKING!**



A composite image featuring a chef on the left and a landscape on the right. The chef, David Kapay, is wearing a white shirt and a dark blue apron, with a blue pen in his ear. He is pouring from a silver pitcher into a glass. The landscape on the right shows a large tree on a grassy bank overlooking a river, with hills in the background under a warm, orange sky.

# Stay close, go further.

VISIT THE MURRAY

**David Kapay**

Miss Amelie  
Wodonga, The Murray

Our food at Miss Amelie is inspired by the diverse produce grown along The Murray. We love collaborating with local producers and it makes me so proud that I can give back to the community, through food. The Murray River truly is the lifeblood of our region – it creates so many magical moments.

VISIT  VICTORIA

[visitvictoria.com](http://visitvictoria.com)

